



LEMBEH RESORT

Fact Sheet

TABLE OF CONTENTS

| Page | Content |
|------|--|
| 3 | Location and Arrival |
| 4 | Overland and Boat Transfers from Resort to Resort |
| 5 | Accommodation |
| 6 | Cliffside Villa |
| 7 | Premium Luxury Cottages |
| 8 | Hillside Luxury Cottages |
| 9 | Garden View Rooms |
| 10 | Resort Facilities, Restaurant and Bar |
| 11 | Pool, Spa, Additional Resort Facilities |
| 12 | Land Activities and Tours, Dive Center, General Dive Information |
| 13 | Dive Team, Dive Trips |
| 14 | Dive Boats, Photography and Videography Facilities, Photo Center |
| 14 | General Photo Center Information, Camera Room |
| 15 | Sustainability, Lembeh Resort's Sustainability Statement |
| 16 | Lembeh Foundation |
| 17 | Daily Schedule |



LOCATION & ARRIVAL

- Lembbeh Resort is an ocean front property on the west coast of Lembbeh Island in North Sulawesi, Indonesia. The resort is nestled in a private cove, surrounded by rainforest, on the banks of the Lembbeh Strait.

AIRPORT ARRIVAL

- “Sam Ratulangi International Airport” in Manado is the nearest international airport. The airport code is MDC.
- It is a 60 minute drive via the new toll road and 10 minutes by boat from the airport to the resort. All transfers are in fully air-conditioned vehicles.
- Scoot Air (local carrier of Singapore Airlines) offers direct flights from Singapore to Manado. The flight takes 3 hours 45 minutes. This connection is currently operated 3 times a week (Wed, Fri, Sat).
- There are daily flights from Bali, Jakarta, Makassar in South Sulawesi, Sorong in Raja Ampat and Ambon in Halmahera offered by Garuda Indonesia, Batik Air, Lion Air and Citilink.
- Upon arrival an escort will be waiting for you outside of the arrival hall in Manado Airport to greet you and bring you to the resort.
- On arrival we offer a refreshing cool towel and refreshing drink.
- We recommend all guests to use the restroom at the airport before departing to the resort. We can stop along the way to use public restrooms but they are of local standard and are not usually western “sit down” toilets.
- Indonesia offers Visa on Arrival to over 70 countries, please check that your country is on the list. Visa on Arrival is available at 500.000 IDR (est. 35 EUR/ USD). All airport taxes are included in the ticket price.
- Lembbeh Resort offers transfers 24 hours a day.

OVERLAND TRANSFERS BETWEEN RESORTS



- Lembbeh Resort can arrange transfers to any other resort in North Sulawesi.

BOAT TRANSFERS BETWEEN RESORTS

- Transfers by boat are exclusively available between Lembbeh Resort, Murex Resort Manado, Murex Resort Bangka and Siladen Resort. Diving is also available during transfers.
- The transfer price is calculated per boat, not per person. If you join a boat transfer with other guests the price is shared equally. Boat transfers are to be paid in advance with the exception of transfers to Siladen Resort which are paid on site.
- Boat transfers are weather dependent.
- Transfer boats have comfortable seating, bathrooms on board and there are both shaded and sunny areas. There is ample storage space on board for guests' dive gear and luggage.
- All boats carry drinking water, first aid kits and life jackets.

ACCOMMODATION

- Lembbeh Resort offers a total of 20 cottages and rooms in the following categories:
 - 1 Cliffside Villa
 - 8 Premium Luxury Cottages
 - 5 Hillside Luxury Cottages
 - 6 Garden View Rooms



STANDARD FEATURES (ALL ROOMS)

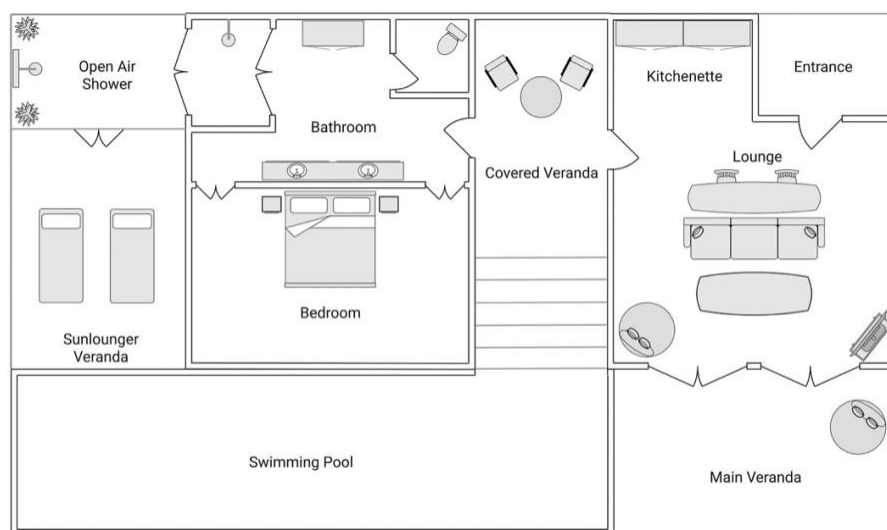
- 24 hour electricity
- Air conditioning
- Ensuite bathroom with hot water showers
- Spacious verandahs with outdoor seating
- Designed with guests' privacy in mind
- Well constructed and well maintained
- Minibar
- Complimentary tea, coffee and drinking water
- Complimentary refillable aluminum water bottle (yours to take home)
- Free WiFi
- Hairdryer
- In room safety box
- King size bed (all rooms can be set as double or twin)
- Desk and chair
- Resort information folder

CLIFFSIDE VILLA

- The Cliffside Villa is a luxurious, modern private villa which offers maximum privacy and fascinating 180 degree panoramic views of volcanoes on the horizon, stunning sunsets and the Lembeh Strait. The villa includes all of our standard features as well as:



- Private infinity pool overlooking the Strait (3m x 9m)
- Bedroom with floor to ceiling windows, living room and ensuite bathroom
- Sundeck with sun loungers, shaded patio and balcony with lounger
- Elegantly decorated bathroom with twin basins
- Indoor and open air showers
- Air conditioning and ceiling fans
- Flat screen TV and blue tooth speakers
- French press
- Complimentary cookies
- Bottle of wine
- 1 hour massage per person
- Private Butler service
- Room service
- Room-to-Room telephone

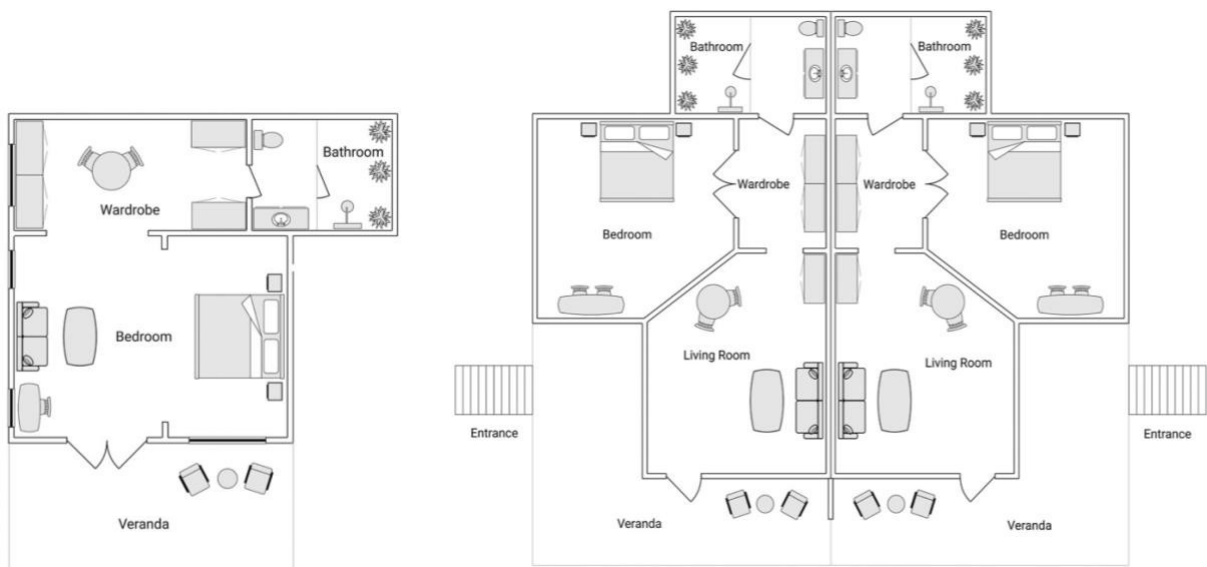


PREMIUM LUXURY COTTAGES

The beautiful Premium Luxury Cottages are closest to the ocean with stunning views over the Lembbeh Strait. The construction of the cottages focused around utilizing modern materials to create luxury, yet more sustainable and energy efficient accommodation options to promote a sense of harmony and balance. Attention to detail has been applied throughout, from ambient lighting to elegant furnishings. Premium Luxury Cottages offer generously proportioned, modern living spaces with thoughtful Indonesian and tropical finishes. Premium Luxury Cottages include all of our standard features as well as:



- Individual cottages nestled in tropical gardens overlooking the Strait
- Modern furniture, fixtures and fittings
- Double glazing and insulating construction for optimum temperature control
- Spacious veranda with outdoor seating
- Views of volcanoes, the sea and incredible sunsets
- Additional indoor living areas comprising of sofa plus table and chairs
- Generous closet and storage space
- Air conditioning and ceiling fan
- Semi open air bathrooms which feature exquisite detailing and rainfall showers
- All Premium Luxury Cottages have space for an extra bed upon request
- Four Premium Luxury Cottages are suite style and suitable for quad-sharing
- Room to room telephone

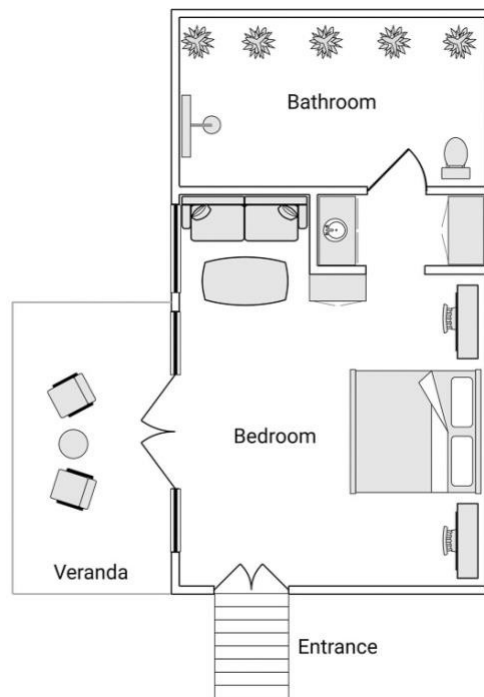


HILLSIDE LUXURY COTTAGES

The Hillside Luxury Cottages enjoy an elevated position over the resort which provides for spectacular views of the Lembeh Strait and surrounding area. Hillside Luxury Cottages offer all of our standard features plus:



- Individual cottages with private access situated on the hillside
- Spacious veranda with outdoor seating
- Incredible views of volcanos, beautiful sunsets and the Lembeh Strait
- Generously proportioned room with built in sofa and indoor relaxing area
- Air conditioning and ceiling fan
- Semi open air bathroom
- All Hillside Luxury Cottages have space for an extra bed upon request.
- Room-to-room telephone

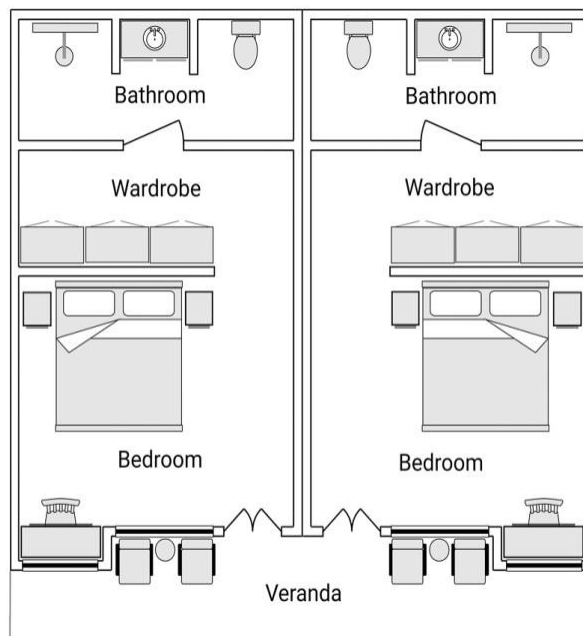


GARDEN VIEW ROOMS

These rooms offer great value for money and are perfect for single travelers and couples (max. 2 guests per room). The Garden View Rooms are located in two buildings, one of which offers rooms on two floors. Garden View Rooms come with our standard features plus:



- Fully enclosed ensuite bathrooms
- Terraces with outdoor seating
- Beautiful tropical garden views
- Located in the central resort area; close to dive center and restaurant
- Ample closet and storage space



RESORT FACILITIES

Lembah Resort is a full board resort and all stays include 3 meals per day in the restaurant and snacks between dives at the pool bar.

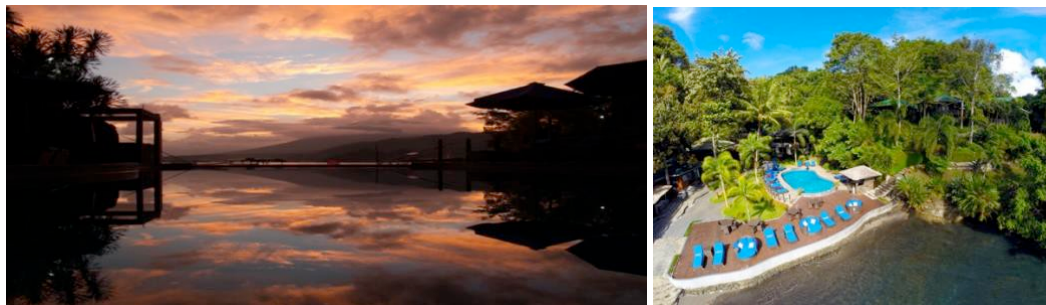
Complimentary brewed coffee, tea and water are available throughout the day at the restaurant or pool bar.

RESTAURANT AND BAR



- The open air restaurant and bar are located in the center of the resort and operate from 7.00am – 10.30pm
- Lembah Resort's internationally trained chefs offer extensive menu choices which combine the tantalizing flavors of Asia with tastes from home. We source the freshest local ingredients and the menu changes daily and according to the seasons.
- The restaurant can also cater to special diets including vegetarian, vegan, lactose intolerant, gluten free and any allergies. Special requests can be catered for.
- The bar offers an extensive wine list, cold beers and a variety of cocktails, mocktails, long drinks and soft drinks.
- Café latte, cappuccino, espresso, long black & decaf coffees are also available at the bar and restaurant.
- Drinks are also served at the poolside bar.
- Several times a month Lembah Resort offers a traditional Indonesian BBQ where the local children's Sunday School Choir also performs.
- BREAKFAST: fresh fruits and juices, homemade breads, cheeses, cold cuts, jams and savory spreads, Danish pastries, a variety of cereals, eggs - cooked to order, pancakes, French toast, Indonesian breakfast dishes, English and European breakfasts, yogurts, fresh milk, soy milk and much more.
- LUNCH: offers a great variety of fresh Indonesian, Western and Asian dishes, salads, soups, fruits and desserts.
- DINNER: is served à la carte (4 courses) and offers a selection of local and Western dishes.

POOL



- Our freshwater pool has a shallow area plus a 2.2 meter deep end. The pool is centrally located in the resort overlooking the Strait.
- Sun loungers with umbrellas and additional seating including cozy outdoor sofas.
- Chairs and tables are available on the sundeck surrounding the pool for enjoying snacks and drinks after diving
- Pool towels are supplied.

SPA



- The Spa is open from 2.15pm - 10.30pm (earlier treatments are available upon request)
- Treatments can be booked at reception.
- The Spa offers full body massages, aromatherapy, warm lava stone treatments, foot massages, facials, manicures, pedicures and body scrubs. Treatments are mostly 60, 90 or 120 minutes and longer 'Relax and Rejuvenation' packages are also available.

ADDITIONAL RESORT FACILITIES

- The pool deck has additional seating and sun loungers with views of the Strait, the volcanoes on the mainland and stunning sunsets.
- There is a book exchange/ library located in the lobby area.
- A computer is located in the lobby area for guest use.
- Laundry service is available (surcharge applies).

LAND ACTIVITIES & TOURS



Several land tours are available to book at the reception:

- Tangkoko National Park trips where one can see tarsier monkeys, black crested macaques, cuscus bears, rare bird species and many other species in this beautiful region of protected rainforest.
- Experience the rich culture of North Sulawesi and take a tour of the Minahasan Highlands. Visit traditional markets, villages, Mahawu Volcano, Tondano crater lake, natural geothermal hot springs and a changing-color Sulphur lake, WWII Japanese caves and secluded waterfalls. Our team will create an itinerary based on your interests.
- Local jungle hikes and local Lembeh village tours.
- Morning market tour and cooking classes
- Mangrove and sunset tours cruises.
- Tailor-made tours on request.

An experienced, English speaking tour guide from our resort will accompany all tours.

DIVE CENTER



Our dive center goes under the name of Critters at Lembeh Resort.

GENERAL DIVE INFORMATION

- Normal opening times: 7.30am - 5pm
- INT and DIN tanks are available.
- 15ltr / 100CF tanks are available at a surcharge
- 32% Nitrox is available at a surcharge
- PADI Courses and Experiences are also available and should be prebooked

DIVE TEAM

Lembeh Resort's team of dive guides have a combined total of over 70,000 dives in the Lembeh Strait. All dive guides go through our rigorous training programs which include the following:

- Annual rescue training plus regular refreshers
- Marine biology training with our in house Marine Biologist
- Photography training with our Photo Pro – hours of classroom study and hundreds of dives, practicing and observing techniques
- 4 levels of critter testing & Critter Log training
- Extended training in Bunaken and Bangka

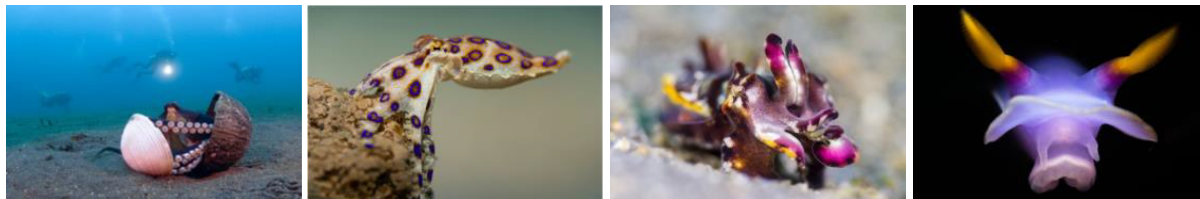
We also have a team of dedicated photography dive guides who have undergone additional hours of classroom theory taught by our Photo Pros and participated in professional workshops.

Our photography dive guides have hundreds of hours of in-water experience – often with some of the world's most esteemed photographers. Our underwater photography dive guides not only understand photography but they have a real passion for it and are always enthusiastic to help underwater photographers.

For those who are seeking a more exclusive experience we also offer private dive guides and camera caddy guides for underwater photographers.

Your dive guide will be by your side on every single dive and lead you to some of Lembeh's most iconic critters.

DIVE TRIPS

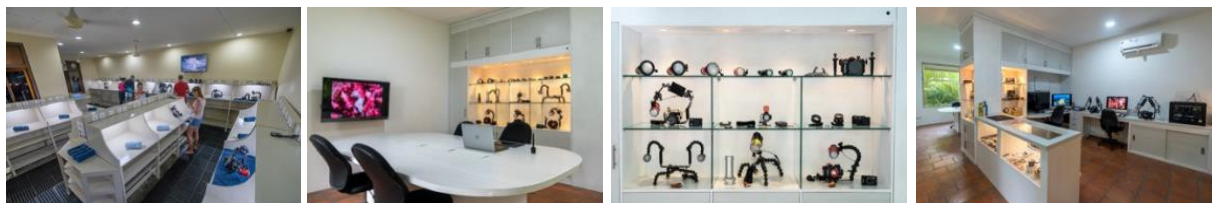


- 3 boat dives per day (8am / 10.45am / 2.30pm). We return to the resort after each dive.
- More than 70 dive sites, most of which are reachable in 2-20mins. Lembeh is world- famous for its incredible muck and critter diving, but pristine coral sites, pinnacles and reefs are also within easy reach.
- Mandarinfish dives depart at 4.45pm on designated week days.
- Boat night dives are possible every day and depart at 6.15pm (minimum of 2 divers)
- House Reef night dives are always possible (shore diving).
- Bonfire and blackwater dives are a great Lembeh experience and can be arranged for any night and the boat departs at 6.30pm. Enquire for the best dates at check in.
- 2-3 dive trips to further afield are available to visit the coral reefs of Bangka Island, the north end of the Strait, and we can even circumnavigate Lembeh Island! (Day trips include lunch on the boat or a beach and can be booked on site).

DIVE BOATS

- All boats are equipped with life jackets, emergency oxygen, first aid equipment and telephones for emergency communication.
- There is drinking water on board and after every dive fresh fruits are served.
- Towels are available on board.
- Each boat has purpose built tank racks, seating areas, toilet, shaded areas and open areas for those who like the sun.
- Private boats are also available at a surcharge.

PHOTOGRAPHY & VIDEOGRAPHY FACILITIES



THE PHOTO CENTER

Our Backscatter Authorized Photo Center is fully equipped to cater to the most discerning underwater photographers and videographers. Our fulltime Photo Pro teaches underwater photography, videography and editing courses for beginners through to Pros. Courses are tailored to meet your requirements. Photo Center Assistants are also available to assist with rental equipment, sales, and are on hand to give advice and recommendations as well as carry out minor repairs.

The Photo Center offers a wide range of accessories for sale and to rent such as strobes, video lights, arms, memory cards, macro lenses, snoots etc. Complete rigs, cameras and housings are also available.

GENERAL INFORMATION

- Opening times: 7.30am – 5pm
- 3D printer is available for custom made mounts and replacement parts
- Courses can be booked on site or in advance
- Air conditioned classroom and editing area

CAMERA ROOM

A spacious and secure camera room is available for guests to store and charge their cameras. Each guest is offered a private work station with international charging points. Towels, air guns and extension cables are also available.

- Opening times: 6.30am – 10.30pm (locked overnight)
- CCTV

SUSTAINABILITY



LEMBEH RESORT SUSTAINABILITY STATEMENT

Trying to keep our beautiful resort as green and environmentally sustainable as possible is not a small task. We are constantly trying to identify areas in our operations where we can reduce emissions, plastic, water and non-renewable energy. It's a never ending process.

When new technologies develop and become available in Indonesia, areas we previously thought we couldn't improve on, we suddenly can. We are constantly researching new green innovations, revising our methods and implementing changes.

We firmly believe that sustainability encompasses more than just environmental issues and we work alongside our local villages to find economically sustainable options which empower all members of the community, through education and providing practical and workable solutions, regardless of age, gender and ethnicity.

We are committed to saying 'no' to single use plastic and products containing palm oil wherever possible. We do not use plastic straws or plastic water bottles, we ask suppliers to opt for non-plastic packaging and we have removed products containing palm oil from our spa. We aim to find sustainable alternatives to single use plastic and palm oil in all of our operations.

We have water management systems in place and we organize regular beach and underwater cleanups. We have a coral nursery which is maintained by our dive team and marine biologist. We also support local school children who are in need by supplying school uniforms, backpacks and necessary stationary items. We provide education around sustainability and conservation via the Lembeh Foundation.



LEMBEH FOUNDATION

Lembeh Resort is the founding Resort member of the Lembeh Foundation. The Lembeh Foundation is an independent registered Indonesian charitable organization which works alongside local communities on Lembeh Island to provide environmental and economically sustainable solutions to waste management. The core aims of the Lembeh Foundation are to reduce plastic waste, provide education and economic benefits while improving the health and sustainability of local communities.

Lembeh Foundation is currently focusing on two major projects:

1. The Trash Bank: This is a waste bank constructed and funded by Lembeh Foundation, where villagers can take their waste for recycling in return for cash. The aim of this initiative is to reduce the amount of waste on the island, while encouraging local communities to dispose of waste responsibly while benefitting economically.
2. The Green Library and Learning Center: Lembeh Foundation has built a two-storey Learning Centre in one of the local villages. The Green Library provides educational material for children which introduces them to sustainability through active and fun activities. Green Library activities are conducted by members of the Lembeh Foundation.

DAILY SCHEDULE

Blue = Dive Departure

Purple = Restaurant Service

- 06.30 Camera room is unlocked
- 07.00 Breakfast service starts in the restaurant
- 07.30 Dive center opens
- 07:30 Photo center opens
- 07.30 Your dive equipment is loaded onto your boat by the dive team
- 07.45 Nitrox tanks are available for analysis
- 08.00 First dive departs
- 09.45 Dive boats return from the first dive
- 10.45 Second dive departs
- 12.30 Dive boats return from the second dive

- 12.30 Lunch service starts in the restaurant
- 14.00 Lunch service closes
- 14.15 Spa opens
- 14.30 Third dive departs
- 16.15 Dive boats return from the third dive
- 16.45 Boat departs for mandarin fish dive (on certain days only)
- 17:00 Photo Center closes
- 18.15 Night dive boat departs

- 19.00 Dinner service starts in the restaurant
- 19.45 Night dive boat returns
- 22:30 Dinner service closes
- 22.30 Camera room is locked
- 22.45 Spa closes
- 22.45 Bar service closes (if guests have retired to their rooms)